

Face to Face Meeting 42 in Taipei 3~5/Oct/2017

Benjamin Chiang
Chunghwa Telecom



ALWAYS AHEAD

為了你

一直走在最前面



Refresh your life

Meeting Information

- Meeting site : [GIS NTU Convention Center](#)
- B1F., No. 85, Sec. 4, Roosevelt Rd., Zhongzheng Dist., Taipei City 100, Taiwan

1. Accommodation :

- Just Sleep @NTU : (meeting site) (50 rooms reserved)
about US\$ 124 (Hollywood Twin with breakfast) (36 rooms reserved);
about US\$ 124 (Hollywood King with breakfast) (14 rooms reserved)
<http://www.justsleep.com.tw/NTU/en/accommodation/page/29>
- Just Sleep @Ximending Branch : (10 rooms reserved)
about US\$ 107 (1 large bed with breakfast)
<http://www.justsleep.com.tw/Ximen/en/accommodation/page/12>

Notice reminder :

- **Hotel group booking (25%~35% discount) will be end at 4/Aug/2017.**
- If invitation letter is needed, register on wiki before 1/Sep/2017

Information of GIS NTU Convention Center

i GIS NTU Convention
Center



PLATO



Transport & Map

Gongguan station(G07)



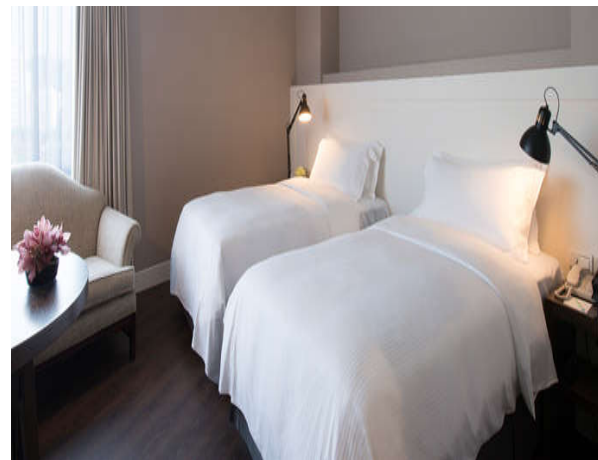
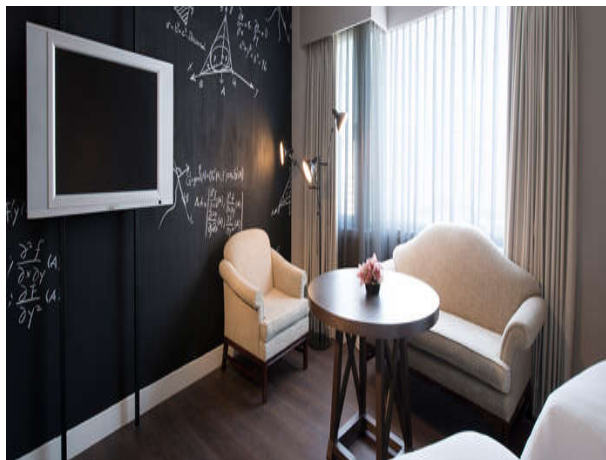
GIS NTU Convention Center(meeting site) is only two minutes walk from Just Sleep @NTU.

Going from Just Sleep @Ximending to GIS NTU Convention by metro is about 10 mins (1USD).

Information of Just Sleep @NTU Hotel



Just Sleep @NTU Hollywood King & Twin



<http://www.justsleep.com.tw/NTU/en/accommodation/page/29>

Hollywood King & Twin

Arrival Date: Tuesday, October 03, 2017 Room: 1 Adult: 1
 Departure Date: Thursday, October 05, 2017 Nights: 2

[Edit Dates](#)

12 Rooms Match Your Selections

USD 165.00 - USD 435.00 *average nightly rate*

Currency

US Dollars

[Filter Results](#) →

Best Available Rate (Click to read details)

Best Available Rate with Breakfast

Hollywood King USD 169.55
 Approximately 33 square meters, King bed(210*210cm)

Hollywood Twin USD 169.55
 Approximately 33 square meters, twin beds(105*210cm)

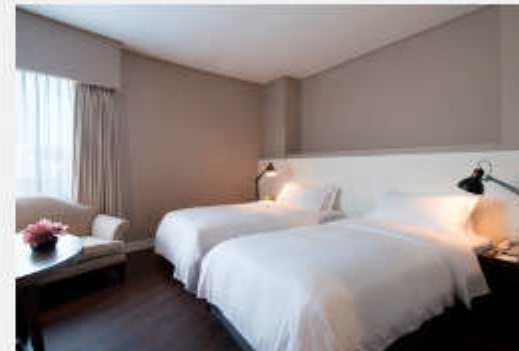
Family Twin USD 202.16
 Approximately 33 square meters, 2 medium bed(140*210cm), suitable for 2 adults and 2 children

Deluxe Suite USD 260.85
 Approximately 66 square meters, 1 queen bed(180*210cm) and 2 sofa bed(80*190cm)

Executive Suite USD 260.85
 Approximately 66 square meters 1 queen bed(180*210cm) and 2 sofa bed(80*190cm)

Rack Rate

Free internet access- Daily breakfast included



Hollywood Twin



-Available only for faculty members, instructors, and students affiliated for research and education purposes.

- Maximum two adults, no extra bed allow
- World-renowned, body contouring Wellspring Bed
- FREE International TV channels
- Private shower room
- Free bathroom amenities

Room Charges: USD 339.10
 Fees: USD 0.00
 Tax: USD 0.00
 Total: USD 339.10

[View Price Breakdown](#)

[Continue](#)



Hollywood King
 Chungwa Telecom

USD 269.00

為了你 一直正仕取別國 Always Ahead

o

Transport & Map



Directions

Address: No. 83, Sec. 4, Roosevelt Rd., Taipei 10673, Taiwan
Tel: 886 2 7735 5088

From Taoyuan International Airport to the Hotel

It is recommended that you take public transportation to reach the Hotel. Take the shuttle buses to Taipei Main Station, and from there you may catch a cab. Or catch the MRT and exit at Gongguan Station, take exit 2 and walk for approximately 2 minutes to reach the hotel.

High Speed Rail (HSR)

Take the High Speed Rail to the Taipei Station; transfer to the Metropolitan Rapid Transit (MRT), exit at Gongguan Station, exit 2. Walk for approximately 2 minutes to reach the hotel.

Metropolitan Rapid Transit (MRT)

Take the MRT and exit at Gongguan Station, take exit 2 and walk for approximately 2 minutes to reach the hotel.

<http://www.justsleep.com.tw/NTU/en/location>

Information of Just Sleep @ Ximending Hotel



Just Sleep Ximending Branch Deluxe Room



Sleep

Check-in: 3 pm
Check-out: 12 pm
Breakfast: 6:30 - 10:30 am

Deluxe Room

- Approximately 23 m², 1 large bed
- Daily breakfast
- Mineral water/ coffee and tea
- Free internet connection, TV (includes satellite TV), refrigerator, international direct dialing (IDD), in-room safe
- Free Self-service Laundry Room
- Pressure-relieving, body contouring Wellspring Bed
- Complimentary access to Just Café that provides newspapers, magazines, snacks, fruit, coffee, and tea
- Just Sleep offers tourist information, restaurant recommendations, and area maps
- Additional beds or children's beds are unavailable for this room type

Deluxe Room

Select Dates > **Rooms & Rates** > Select Packages > Checkout > Review > Confirmation

Your Stay

Arrival: OCT 2017, 3 TUE
Departure: OCT 2017, 5 THU

Guests: 1 Adult
[Edit](#)


Refine Results

Price Range: USD 167.00 - USD 234.00
average nightly rate

Rooms ▾

Available Rooms & Rates [Compare Rooms](#)

Best Available Rate with Breakfast
Best Available Rate with Breakfast
[More about this Rate](#) [Rate Detail](#)
Policies Any cancellation received within 3 days prior to arrival date will incur the first night charge. Failure to arrive at our hotel will be treated as a No-Show and will incur the first night charge Any reservation must be guaranteed at time of booking by credit card.
[Hide Available Rooms](#)

 **Deluxe Room** Add To Compare
23 square meters with a queen bed(152*188cm)
[Read more](#)
USD 177.70 / Night
Including Taxes & Fees
[View Price Breakdown](#)
[enlarge](#) [Select](#)

Transport & Map



Directions

Address: No. 41, Sec. 1, Zhonghua Rd., Taipei 10042, Taiwan
Please enter from No.144, Sec. 1, Hankou St entrance.
Tel: 886 2 2370 9000

From Taoyuan International Airport to the Hotel

It is recommended that you take public transportation to reach the Hotel. Take the shuttle buses to Taipei Main Station, and from there you may catch a cab. Or catch the MRT and exit at Ximen Station, take exit 5 and walk for approximately 3-5 minutes to reach the hotel.

High Speed Rail (HSR)

Take the High Speed Rail to the Taipei Station; transfer to the Metropolitan Rapid Transit (MRT), exit at Ximen Station, exit 5. Walk for approximately 3-5 minutes to reach the hotel.

Metropolitan Rapid Transit (MRT)

Take the MRT and exit at Ximen Station, take exit 5 and walk for approximately 3-5 minutes to reach the hotel.

<http://www.justsleep.com.tw/Ximen/en/location>

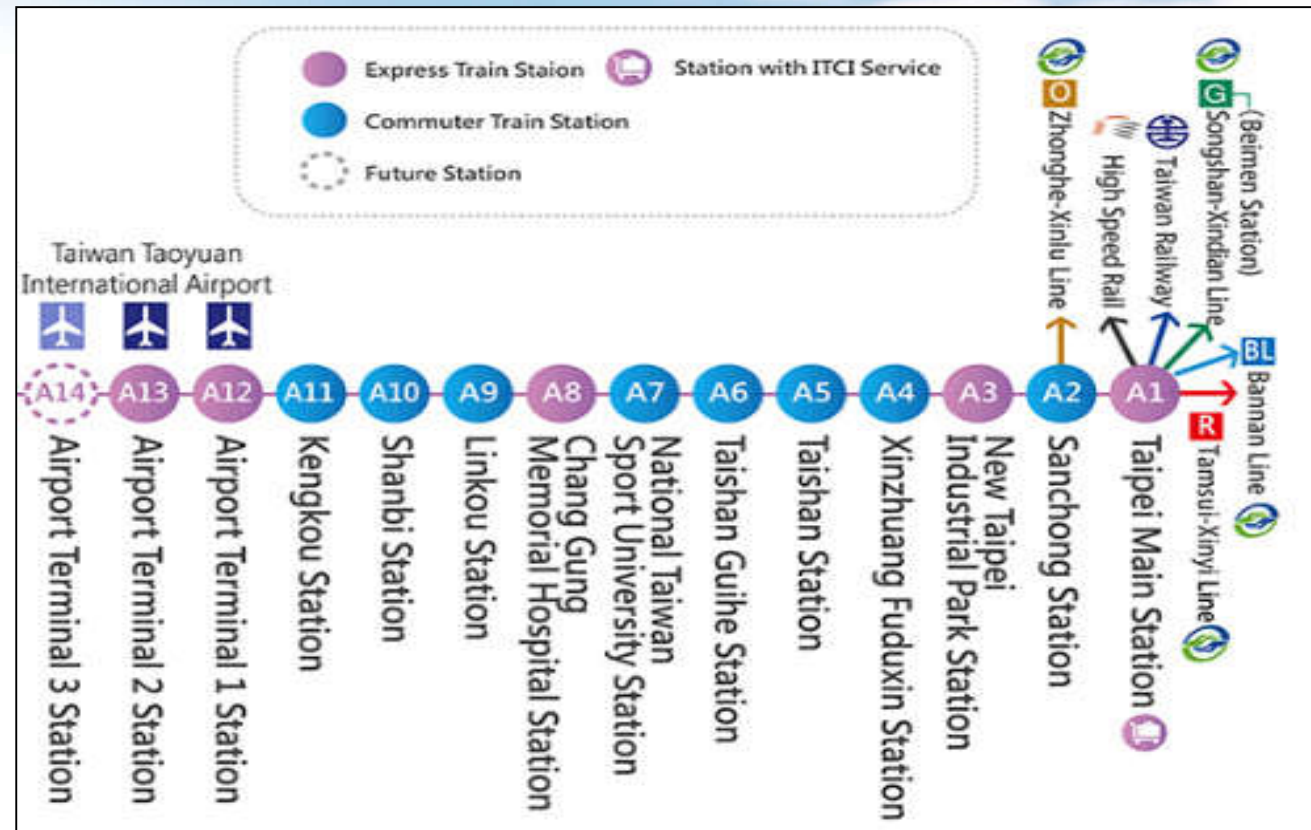
From Taoyuan Airport(TPE) to Hotel

- ❖ Take Taoyuan metro from airport terminal 1 (A13) or terminal 2 (A12) to Taipei main station (A1). (USD\$5)
- ❖ Transfer to metro **Beimen station (G13)**.
- ❖ Take metro green line with direction Xindian
 - Just Sleep Ximending at Ximen station(G12)
 - Just Sleep NTU at Gongguan station(G07)
 - GIS NTU Convention Center at Gongguan station(G07)

Taipei metro map



Taoyuan Airport Metro



Taoyuan Metro

Ticket Fare : Single Ride NT\$160

Duration : Approx. 35 to 40 minutes

Operation Time : First Train 06:00 、 Last Train 23:35 (The frequency is every 15 mins)

Please get off the metro "Taipei Main Station A1-台北車站A1."

Transfer to Beiman to [G]Songshan-Xindian Line to Gongguan(or Ximen) Station to the

From Songshan Airport(TSA) to Hotel



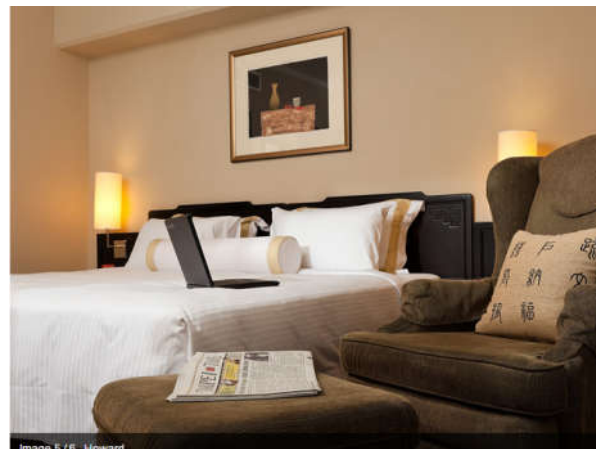
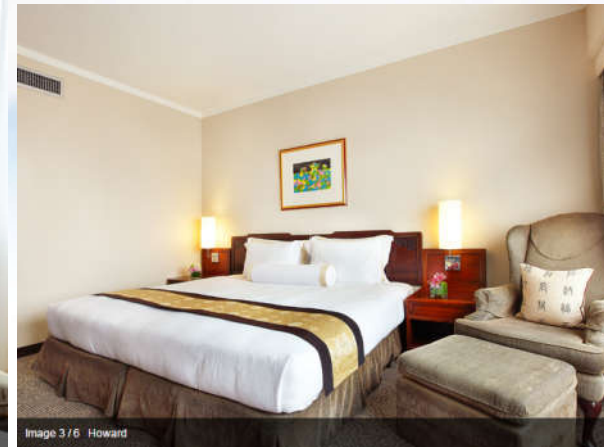
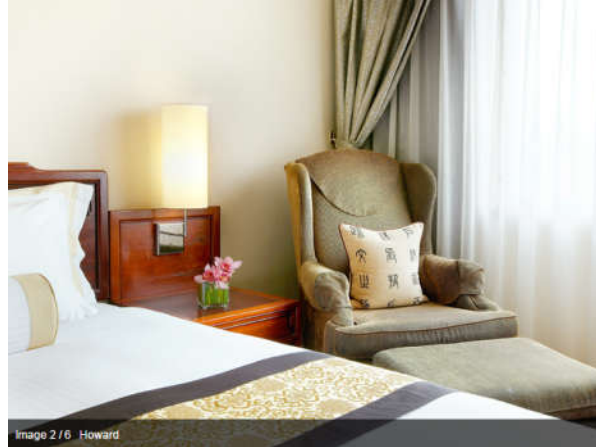
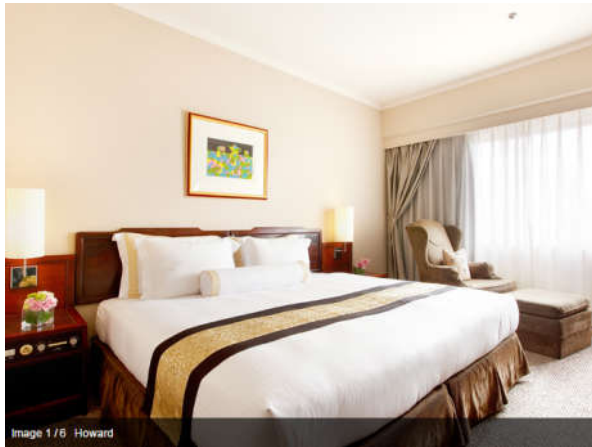
- Take Taipei Metro (MRT) from BR13 Songshan Airport Station to BR11 Nanjing Fuxing Station.
- Transfer to Songshan-Xindian Line to Ximen or Gongguan Station to the hotel.

Information of Another Hotel

The Howard Plaza Hotel Taipei (5*)

No group booking

The Howard Plaza Hotel Taipei Superior King



Superior King

Superior King

This luxurious single room is approximately 8 pings/25 m2. Elegant Chinese-style furniture gives the interior a warm feeling and bright colors create a welcoming space to provide the tired travelers a moment of peace.

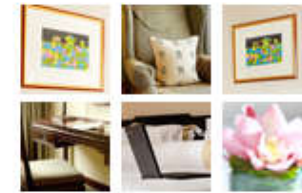
Thoughtfully designed for business travelers and holiday makers, the room is fitted with a comfortable oversize bed to ease your fatigue after a day full of activities and rejuvenate you for a new day filled with energy.

Amenities

Mini bar, electric kettle, LCD TV, electronic safe, emergency flashlight, bathroom telephone, weight scale, hair dryer, magnifying glass, two dual-line telephones, bathroom telephone, and free Wireless + Wired(LAN) internet access.

Terms & Conditions

- The daily check-in time is after 3.00 pm and check-out time before 12.00pm.
- A charge of NT\$ 1,500+10% per day is applicable to each additional bed.
- All the above quoted prices are subject to change without prior notice, please feel free to contact the reception staff.



Room Reservations

Superior King
Price : NTD \$10,000

[Booking Now >](#)

Additional Services

Airport Shuttle

One-way: From NT\$ 1,995
(Howard Plaza Taipei to
Taoyuan International Airport).

Room Service

Howard Plaza Hotel's room
service offers a wide variety of
delicacies to satisfy the
different preferences of the
world travelers.

Transport & Map

- The Howard Plaza Hotel Taipei to GIS NTU Convention Center(meeting site) By taxi(about 11 minutes, 5USD).

Address: 160, Ren Ai Road, Sec. 3, Taipei, Taiwan 10657, R.O.C



From the Airport

Airport Bus - Howard Plaza Hotel, NT\$ 145 one way (about 50 minutes)

Limousine transfer NT\$ 1,995 one-way

MRT:

Bannan Line: Zhongxiao-Fuxing Station, Exit 2

Wenshan-Neihu Line: Daan Station

Bus

245, 261, 263, 270, 311 (Yongfu), 37, 621, 630, 651, 665, 204, 204 (shuttle), 278, 685, and 74

Driving

From National Highway No. 1, exit to Jianguo Road (elevated road) and take the Zhongxiao E. Road exit, turn left under the elevated road and then go straight, turn right onto Fuxing S. Rd., and then turn right onto Renai Rd. Howard Plaza Hotel Taipei is at the left side of the green-shaded Renai Road.

http://taipei.howard-hotels.com/CT_Taipei2.php?Psn=6107

What's near by

- ❖ Gongguan night market
 - Various Taiwanese food
 - Many shoes stores
 - [Introduction on web](#)
- ❖ National Taiwan University
 - Famous school campus with historical buildings

Contact information

❖ Just Sleep hotel reservation assistant manager

▪ *Ms. Raven Lin*

- Tel: +886-2-7735-5000
- Email: rsvn@justsleep.com.tw

❖ ChungHwa Telecom.

▪ Li-Chun Chen

- Tel: +886-2-2344820 ext 4025
- Email: realsky@cht.com.tw

▪ Benjamin Pin-Jung Chiang

- Tel: +886-3-4244782
- Email: brchian@cht.com.tw

Visa free country

Australia, Austria, Andorra, Belgium, Brunei, Bulgaria, Canada, Chile, Croatia, Cyprus, Czech Republic, Denmark, Estonia, Finland, France, Germany, Greece, Hungary, Iceland, Ireland, Israel, Italy, Japan, Republic of Korea, Latvia, Liechtenstein, Lithuania, Luxembourg, Malaysia, Malta, Monaco, Netherlands, New Zealand, Norway, Poland, Portugal, Romania, San Marino, Singapore, Slovakia, Slovenia, Spain, Sweden, Switzerland, Thailand, U.K., U.S.A., Vatican City State